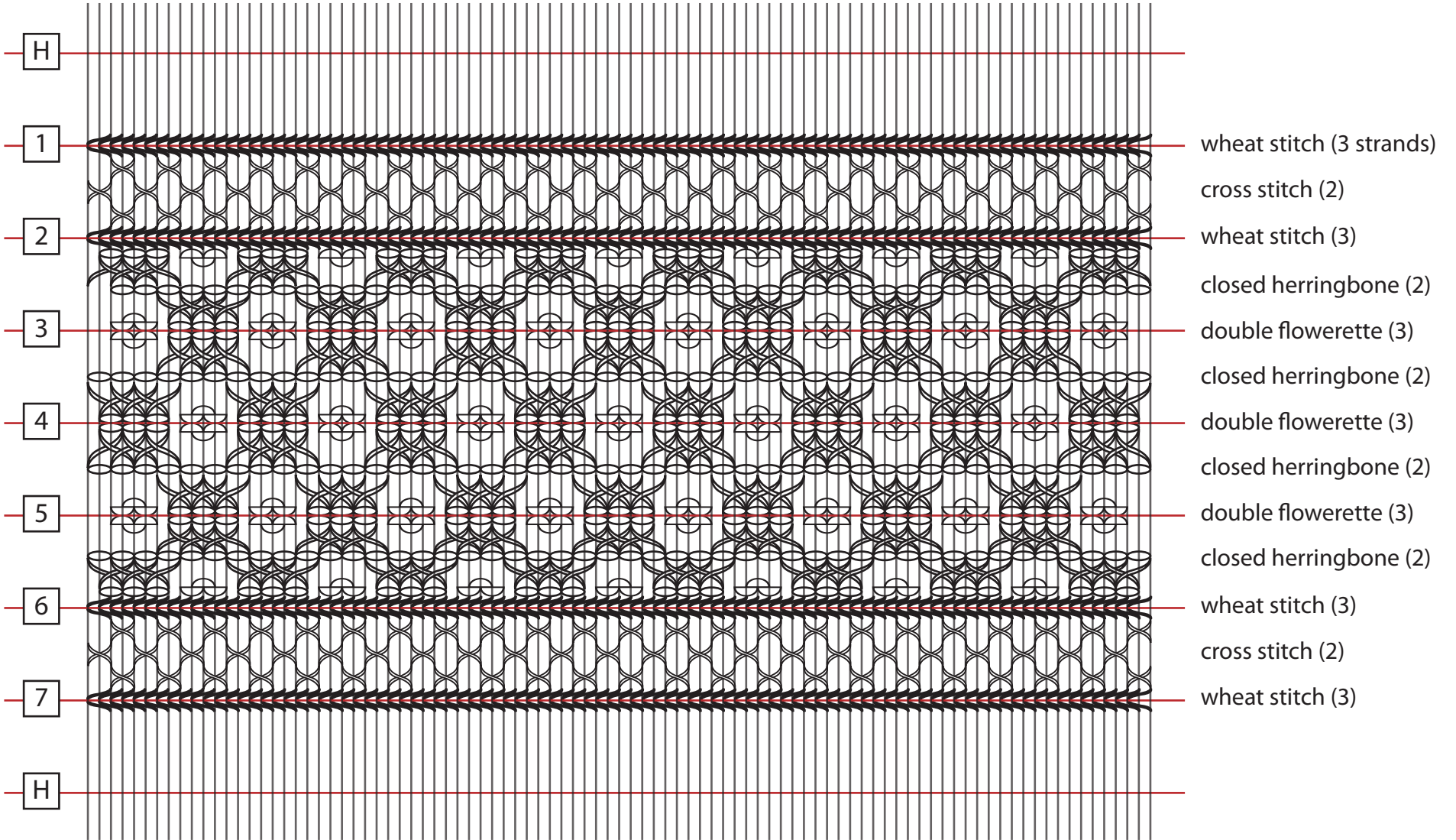




SMOCKED LACE BAND DIRECTIONS AND GRAPH
by Claire Meldrum

"Smocked Lace Band"
 designed by Claire Meldrum



Smocked Lace Band Directions

1. Using three strands of floss, work a row of wheat stitch across rows 16, 17, 21 and 22.
2. Beginning on the right side of the insert, and using two strands, work the cross stitch pattern between rows 16 and 17. To work cross stitch, secure floss and come up on the left side of pleat two just below row 16. Take the floss through the right side of pleat 1 at row 16 $\frac{1}{3}$, taking the needle from right to left through pleats 1 and 2. Emerge on the left side of pleat two on row 16 $\frac{1}{3}$. This forms the first angled arm of the cross stitch. Carry the floss up to row 16 across pleats 2 and 1, and take the needle down to the back through the right side of pleat 1 to complete the crossed stitch. Repeat across the row, leaving two pleats blank between each stitch. Work three rows of cross stitch in this fashion, starting the second row over pleats 3 and 4.
3. Work the same three rows of cross stitch between rows 21 and 22.
4. Using two strands of floss, *begin your closed herringbone on row 17 $\frac{1}{2}$. Work up to row 17. Work back and forth between row 17 $\frac{1}{2}$ and 17 until you have worked four closed herringbone stitches. Work down to row 18. Complete four closed herringbone stitches between row 17 $\frac{1}{2}$ and row 18.* Continue this pattern, referring to the graph as needed, alternating between four herringbone stitches up to row 17 and four down to row 18 across the width of the insert.
5. Repeat the same pattern of alternating groups of closed herringbone between rows 19 and 20.
6. Work a mirror image of step #4 between rows 18 and 19 and rows 20 and 21.
7. Using three strands of floss work a single double flowerette in each of the gaps on rows 18, 19 and 20 left by the grouped herringbone. The flowerettes should be centred in the openings and tied off between each one. For the partial openings above and below rows 17 and 21, work either the upper or lower half of the flowerette as appropriate to complete the pattern.